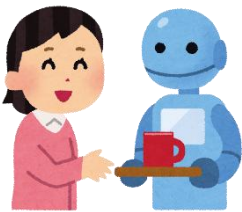


All about the Expo

The Osaka-Kansai Expo will be held until 13 October this year, in Yumeshima, Osaka. It has been fifty-five years since the World Expo was last held in Osaka, in 1970. The theme back then was “Progress and Harmony for Mankind.” Many still remember the Sun Tower, and the moon rocks on display in the American hall. This year’s Expo theme is “Designing Future Society for Our Lives”. The Expo aims to tackle global issues, with each host country setting a new theme to present their own solutions to those issues.



The universal exhibition has a long history, its origins thought to date to BCE. The world expo in its present-day form can be traced back to 1851, with the Great Exhibition in London. Since then, expos have been held in major cities of countries around the world, but it’s only since World War One that they have been presented under set themes. Japan first participated in the Paris Exhibition of 1867. However, the political context of the time meant that they did not present as “Japan”, but individual stalls representing the Tokugawa Shogunate, and the Satsuma and Nabeshima clans. The first time Japan would participate as a unified nation was at the Vienna Exhibition of 1873.



Many cities have hosted Expos. The selection process is carried out through a vote by members of the Bureau International des Expositions (BIE), with the candidate that receives 2/3 of the vote becoming the next host country. It has been decided that the next World Expo in 2030 will be hosted in Riyadh, the capital of Saudi Arabia. At the Saudi Arabia

Pavilion, you can view 3D models and VR simulations of their future megacity project NEOM, as well as “THE LINE”, a city spanning 170km in length and only 200m in width.

It’s easy enough to get from Miyazaki to the Expo venue in Osaka by plane, but you might like to try a different route using the Miyazaki Car Ferry. It leaves Miyazaki Port at night and arrives at Kobe Port the following morning. It’s about an hour by car or by train from Kobe Port to the Expo, so you can comfortably spend the day enjoying the exhibition. Check out the Miyazaki Car Ferry website for more information.

Miyazaki Car Ferry <https://www.miyazakicarferry.com/>

Head to the Expo for the chance to experience some cutting-edge technology this summer!

※The original Japanese version of this article will be uploaded onto the website of the Miyazaki International Foundation soon.

If you have any questions, comments or suggestions regarding this column, please contact the Miyazaki International Foundation (MIF):

TEL : 0985-32-8457 FAX : 0985-32-8512 Email : miyainfo@mif.or.jp

Also, if you ever have any questions or concerns about daily life in Miyazaki, please feel free to get in touch with the Miyazaki Support Center for Foreign Residents:

TEL : 0985-41-5901 FAX : 0985-41-5902 Email support@mif.or.jp