



Plaza News



December 2010

No.57

Miyazaki International Foundation

Questions, comments, postings, or for information in Plaza News: Miyazaki International Foundation, 8F Carino Miyazaki, Tachibanadori Higashi 4-8-1, Miyazaki City 880-0805 Tel: 0985-32-8457 Fax: 0985-32-8512 Email: miyainfo@mif.or.jp Homepage: <http://www.mif.or.jp/>
Open: Tuesdays to Saturdays, 10:00AM to 7:00 PM Closed: Sundays, Mondays, National Holidays and December 29 to January 3

● Notice that the Miyazaki International Plaza will closed

The International Plaza will be closed for the public holiday on December 23rd (Thu). The Plaza will also be closed for the end and beginning of year holidays from December 29th (Wed) to January 3rd (Mon), 2011.

※ We will be reopening from January 4th, 2011.

● 5th Annual "Miyazaki - From the Outside Looking In" Art Festival Opening

*Entrance Free of Charge

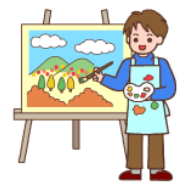
The pieces in this art Exhibition show the thoughts and feelings held by Miyazaki's Foreign Community toward Miyazaki Prefecture. We have already collected some amazing photographs and works of calligraphy. On the same day JICA (Japan International Cooperation Agency) will jointly be holding its own interactive exhibit "Connected to the World". Please come and check them out.

◆ Art Exhibition ◆ ◆ JICA's Interactive Exhibit ◆

◇ Display Time: 12/8 (Wed) to 12/13 (Mon) 10:00 - 8:00 pm

※ Note: The opening day of the gallery will start from 3:00 pm and the final Day will finish at 4:00 pm

◇ Location: Miyazaki Art Center 5th floor Art Space 2



◆ Related Event ◆ December 12th (Sun)

◎ Japanese Speech Contest for Foreign Residents

Foreign Residents will speak about their feelings toward Miyazaki Prefecture. Come and listen to the passionate presentations.

◇ Speech Topic: Your thoughts and feelings about Miyazaki (things relating to daily life, interactions with people, or your own experiences)

◇ Location: Miyazaki Art Center 4th Floor Art Space 1

Speech Contest: 11:00 to 12:45 pm

Awards Ceremony: 1:50 to 2:00 pm

◎ Meet with Exhibitors/ Announcement of Top Entries

Meet with Exhibitors 2:30 to 2:50pm

Announcement of Top Entries 2:50 to 3:00pm

◎ Country Introduction Corner, JICA Introduction booths,

Meet with the Singaporean CIR Yo-san (Quiz Show),

participate in the International Understanding Course (Korea) and more.

※ Please note that the events above may be subject to change without prior notice

◇ Host: Miyazaki International Foundation

Joint hosting: JICA Kyushu

◇ Inquiries: Miyazaki International Foundation



● Library Books and Back Issue

Magazines for Free

At the Art Festival on December 12th (Sun) we will be giving away back issue magazines as well as books. Supply is limited so those that want books or magazines should come early.

◇ Date:

December 12th (Sun) From 12:00 pm

◇ Location:

Miyazaki Art Center 5th Floor
Art Space 2

◇ Inquiries: Miyazaki International Association



● Japanese Practice Sessions for Foreign Residents

*Application is not necessary *Attendance is free

For those of you that would like to practice conversation in Japanese or using phrases that come up in daily life with our Japanese volunteers.

◇ Date & Time:

12/7 (Tue), 12/14 (Tue), 12/21 (Tue)

10:30 - 11:30 am

12/3 (Fri), 12/10 (Fri), 12/17 (Fri), 12/24 (Fri)

10:10 - 11:00 am

Note:

There will be no class on 12/28 (Tue) or 12/31 (Fri)

◇ Location:

(Tuesdays) Carino Miyazaki 8th Floor Miyazaki International Plaza, Multipurpose room A.

(Fridays) Carino Miyazaki 9th Floor

◇ Inquiries: Miyazaki International Foundation

● Looking for Supporting Members

at the International Foundation

Become a supporting member at the International Foundation and help assist Foundation activities.

Membership Fees (Yearly): Individual ¥ 2,000/ Group ¥10,000

• Receive "International Plaza News"

(Monthly in 4 languages)

and "South Wind" (3 times yearly)

• Receive Preferential Treatment for courses or events hosted by the Foundation (Free or discounted attendance, members may also be preferred for some events)

• Receive all printed materials produced by the foundation



[LOCAL ANNOUNCEMENTS]

《Miyazaki City》

**◎Japanese Practice Sessions For Foreign Residents
*Free of Charge, Application Required**

- ◇Date & Time: 12/3, 12/10, 12/17, 12/24 6:30 to 7:30 pm
Every Friday
- ◇Location: Miyazaki City Citizens Plaza 3rd Floor
Community Support Center
- ◇How to Apply: Mail, e-mail, or fax your application forms
to the Miyazaki City International Association

**◎Rice-cake-making and sports!
*Free of Charge, Application Required**

- ◇Date & Time: 12/4 (Sat) 9:00 – 4:00 pm
- ◇Location: Kibana Community Center
- ◇Participants: 30 individuals
(Application is on a First Come First Serve Basis)
- ※Lunch will be provided only for those that take part in both
rice-cake-making and mini-volleyball.



◇Applications & Inquires:

Miyazaki City International Foundation
Miyazaki City International Center Bureau, Miyazaki City
Tachibana Street West 1-1-1 880-8505,
Tel: 0985-21-1719 Fax: 0985-21-1733
Email: miyazaki-mcia@miyazaki-catv.ne.jp

《Nobeoka City》

◎International Exchange Christmas Party

- Date & Time: 12/16 (Thu) 6:30 – 9:00 pm
- Location: Nishishina-town, Minamikatahigashi Community Center
- Inquiries: Nobeoka City International Exchange Promotion Department
Tel:0982-22-7006



《Nichinan/Kushima City》

◎International Christmas Party 2010

- ◇Date & Time: 12/17 (Fri)
Opening 6:30 Opening: from 7:00 pm
- ◇Location: Café NSA, Kushima City, Ooaza Nishikata 5721-1
- ◇Participation Fee: Adults ¥3,000
High School Students and younger ¥1,500
(All children must be accompanied by parents)
- ◇Applications and Inquiries:
Coordinator for International Relations,
Lola Sundin, of Nichinan City Hall's General Affairs Division
Tel:0987-31-1113



<December Events>

Events	Date & Time	Venue	Contact
Nyutabaru Air Festa 2010	12/19(Sun) (Planned Time) 8:30 to 3:00 pm	Shintomi Town Japan Air Self-Defense Force Nyutabaru Airbase	Inquiries: Japan Air Self-Defense Force Nyutabaru Airbase Tel:0983-35-1121
Year in and Year Out New Year's Star Gazing	12/31(Fri) to 1/1(Sat) 2011 New Year's Eve 5:00 pm to New Year's Sunrise	Miyakonojo City Takasaki Town Tachibana Observatory	Participation Fee: Adults ¥500 Elementary Students ¥300 Children three and under ¥200 Inquiries: Tachibana Observatory Tel:0986-62-4936
Ebino Kogen Opening of Ice-skating Rink	11/28(Mon) to Late March (2011) (Open Everyday) 9:00 to 5:00pm	Ebino City, Ebino Kogen Skating Rink	Inquiries Ebino Kogen Onsen Hotel Tel:0984-33-0161

Waltzing Around the World

Paul Richards, Miyazaki Prefecture CIR

Hello Miyazakians. Recently the news hasn't been so pleasant, so I have decided to tell you a happy story. Do you like happy stories? What, you do? I didn't know we had so much in common. That is really cool!
Since coming to Miyazaki I have noticed that many Japanese men get all misty eyed when I told them I am from Nashville. Last night I had such an experience. I was having dinner with a friend's family, when my friend's father – who after disappearing for several minutes - returned with a magazine from the 1970s that focused on southern culture (guns, food, slang, and Americana in general). For whatever reason, the magazine was published by the Yellow Pages and was sold at a price of ¥1,300. We sat around going through the magazine while eating (and drinking). Either I have been in Japan too long or I drank a little too much *Awamori*, but for a moment I swear that I completely got the fascination that many Japanese people have towards "gaikoku".