



Plaza News

December 2007

Miyazaki Prefecture International Plaza

Questions, comments, postings, or for information in Plaza News: Miyazaki International Foundation, 8F Carino Miyazaki, Tachibanadori Higashi 4-8-1, Miyazaki City 880-0805 Tel: 0985-32-8457 Fax: 0985-32-8512 Email: miyainfo@mif.or.jp Homepage: <http://www.mif.or.jp>

Announcements from the Plaza

Please direct all applications/enquiries regarding Plaza announcements to the Miyazaki International Foundation.



◎ Plaza Closure Notice

Please note that the Plaza will be closed during the year-end holidays from 29 Dec 2007 (Sat) to 3 Jan 2008 (Mon). We will re-open on 4 Jan 2008 (Fri).

◎ Miyazaki Art Festival 2008 "Miyazaki - From the Outside Looking In" Art Exhibition DEADLINE FAST APPROACHING!

The Miyazaki International Foundation will be holding the "Miyazaki - From the Outside Looking In" Art Exhibition in early 2008. If you would like to share with others your impression of Miyazaki using your creativity and talent, please send us your artwork!



Theme: Impressions of Miyazaki and things related to Miyazaki (the organizers reserve the right not to exhibit artworks that are considered inappropriate)

Target Participants: In principle, foreign residents of Miyazaki Prefecture

Types of artwork: Photographs, pictures, sketches, poems etc. **Size limitation** Approximately 50cmX50cm

Exhibition Venue: Carino Miyazaki 8th Floor Gaga-8

Exhibition period: 30 Jan (Wed) to 9 Feb 2008 (Sat)



*Artworks will also be exhibited at certain municipalities within the prefecture after the Art Festival 2008.

To submit: Send us your work by post (postage paid) or bring it down to the Miyazaki International Plaza. Artwork must bear the name, contacts and nationality of the artist, together with the title and a brief explanation of the artwork.

Deadline: **22 December 2007 (Sat)**

Return of artwork: Please pick up your work(s) from the Miyazaki International Plaza by the end of April 2008, or we can send your work(s) to you with postage due on delivery.



◎ International Understanding Seminar Feel the World around You ~Seminar 3: On Egypt~

We live in a stressful society, and many of us are affected by stress in our daily lives in one way or another. The speaker from Egypt will be discussing about stress among Japanese people while looking at Japanese and Islamic culture. We sincerely welcome you to this talk.

※Talks will be held in Japanese.

Date/Time: 22 Dec (Sat) 1:30pm to 3:30pm

(Please understand that the seminar might not end exactly at the stipulated time)

Venue: Carino Miyazaki 8th Floor Theatre

Capacity: 80 (prior registration required)

Speaker: Mr. Ibrahim Elakead



Mr. Elakead was born in Egypt and majored in Psychology in Cairo University. He completed his post-graduate studies at Miyazaki University Graduate School. He is currently engaged in psychological counseling activities in Miyazaki City.

To apply: Call, email or fax us your address, name, and contact number

Application/Enquiries: Miyazaki International Foundation

※If you are coming by car, please park in the pay car parks nearby. Please understand that the Foundation does not provide parking tickets.

◎ Japanese Practice Sessions for Foreign Residents (※Free ※No prior registration needed)

Looking everywhere for someone to practice speaking Japanese with?

Why not do it with our Japanese volunteers? Feel free to join in!

*Please note that the last practice lesson would be on the 21 December 2007 (Fri).

Lessons will reopen on the 8 January 2008 (Tues).

Date: Every Tuesday/Friday 10:30 to 11:30am **Location:** Carino Miyazaki 8th Floor Gaga-8

Enquiries: Miyazaki International Foundation



Plaza Announcements (cont)

© World Box



The Miyazaki International Foundation has "World Boxes" containing maps, instruments, CD, costumes from 13 countries and 3 regions available for borrowing. Please feel free to make use of them if you are holding international understanding courses or related events. Contents may differ according to countries.

Countries available: South Korea, Singapore, Socialist Republic of Vietnam, Canada, New Zealand, Australia, United Kingdom, Kingdom of Sweden, Republic of Hungary, Republic of Poland, Republic of Botswana, Republic of Czechoslovakia, Republic of Slovakia

Regions: Africa, Latin America, South America



Other Announcements

The European Union: What, Why, How? (Free of charge)

This event covers the history of the European Union (EU) and its development into the present day. If you have any interest in Europe, this event will provide you with some useful information. ✂ This lecture is in Japanese only

Venue and Date:

- ◇ Takaoka Agricultural Environmental Centre Seikatsu-kaizen Kenkyu Shitsu 12 Dec 2007 (Wed)
- ◇ Miyazaki Citizens' Plaza Conference Room 19 Dec 2007 (Wed)

Note: The event will be held at two different locations, but the content of the presentation and lecture is the same.

Capacity: 30 (first-come first-served)

To apply: Just send a postcard, fax or phone us, and let us know your name, address, telephone number and at which location you will be attending.

Application and Inquiries: Dr. Peter Fuhl, Miyazaki City International Association, Tachibanadori-Nishi 1-1-1, Miyazaki City 880-8505, Regional Community Division

Tel: 0985-21-1714 Fax: 0985-22-0200 Email: miyazaki-mcia@miyazaki-catv.ne.jp

Fun Cooking Class (First-come First Served)

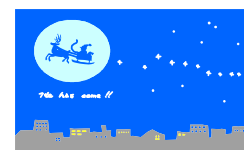
Would you like to interact with others while enjoying great food? The theme this time is Christmas delicacies! Please bring your own apron, cloth and containers.

Date/Time: 5 Dec (Wed) 10:00am ~ 1:00pm

Venue: Nobeoka City Social Education Centre Cooking Room

Capacity: 25 Cost: 800 yen (for ingredients)

Enquiries: Nobeoka City International Exchange Promotion Office Tel: 0982-22-7006



Christmas Party

We're having a Christmas Party down in Nobeoka! Wear something red or green and join us! (e.g. Red ribbon & green necktie)



Date/Time: 21 Dec 2007 (Fri) 7:00pm to 9:30pm Venue: Nobeoka Hoyouen Multi-purpose Hall (Midori-ga-oka)

Capacity: 150 Bring along: One dish (for 3 people), a present below 500 yen

Application/Enquiries: Nobeoka City International Exchange Promotion Office tel: 0982-22-7006



Events in December

Event	Date	Time	Venue	Additional Info
Takachiho Night Kagura	17 Nov (Sat) to 10 Feb (Sun)		Various locations within Takachiho Town	Enquiries: Takachiho Sightseeing Association Tel: 0982-73-1213 http://www.town-takachioho.jp/~syoukan/17yokagura/kagura-sche.htm
Kitaura Town Shimo-Aso Beach Christmas Festival	22 Dec (Sat)	5:30pm ~ 	Nobeoka City Kitaura Town Shimo Aso Beach	Enquiries: Kitaura Sogo Shisho Tel: 0982-45-4238
Obi City New Year's Eve Bell Striking Event	31 Dec (Mon)	10:00pm~ Reception & distribution of numbered tickets (Obi Castle Historical Archives Museum) 11:45~ Bell striking	Nichinan City Obi Castle Kanetsuki Hall	Enquiries: Obi Castle Historical Archives Museum Tel: 0987-25-4533 

~Pat's Little Rant~

Living across the street from a supermarket - one that's open 24 hours a day - means I'm always less than a minute away from a tasty late night snack. You might be in a similar situation, located comfortably close to an always-open convenience store or supermarket. Perhaps you as well often wonder about the lives of those working the late shift, what it's like serving nocturnal insomniacs and drunkards until sunrise. Recently, I've taken it upon myself to strike up conversations with the late night employees, and I must say there are many interesting stories to be heard. By all means, speak with the late night employees, and bring some excitement to their working hours!



Patrick Maher, Miyazaki Prefectural Office CIR